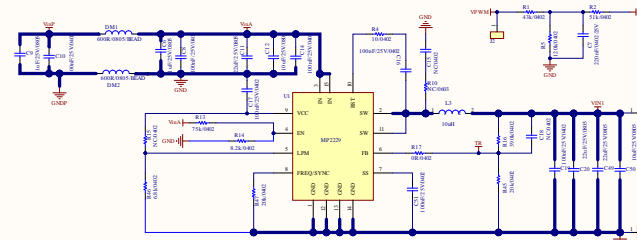
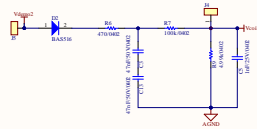


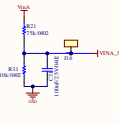
Soft-Start



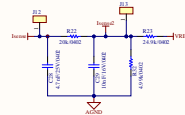
Buck Block



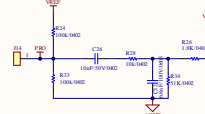
FOD & Protection



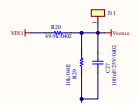
Vin Sense



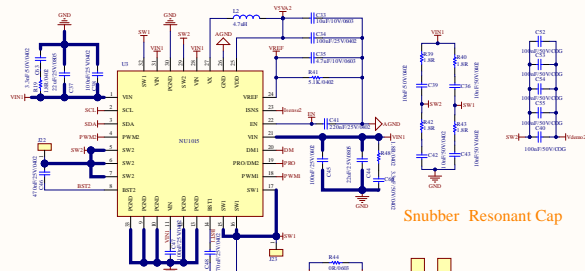
Current Sense



Demodulation

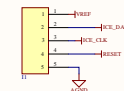
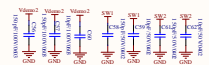


Voltage Sense

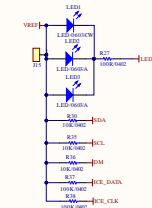


Power Stage

Snubber Resonant Cap

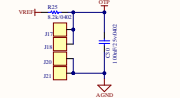


ICE Interface

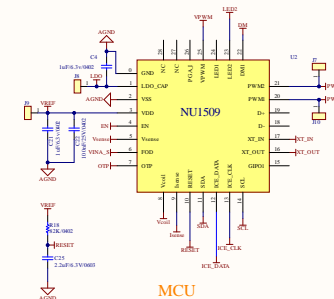


LED Indication & I2C

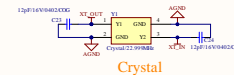
ICE Interface



OTP Block



MCU



Crystal

- Application note:
1. Input voltage 18V, MP-A11
 2. Output supported up to 15W
 3. Pay attention to heat treatment
 4. Protocol supported: iphone, Samsung, Google fast charge and EPP